

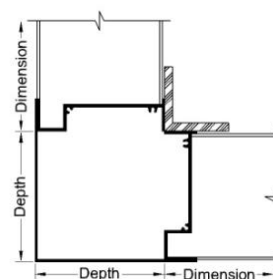
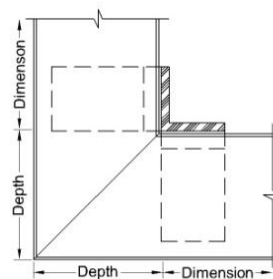
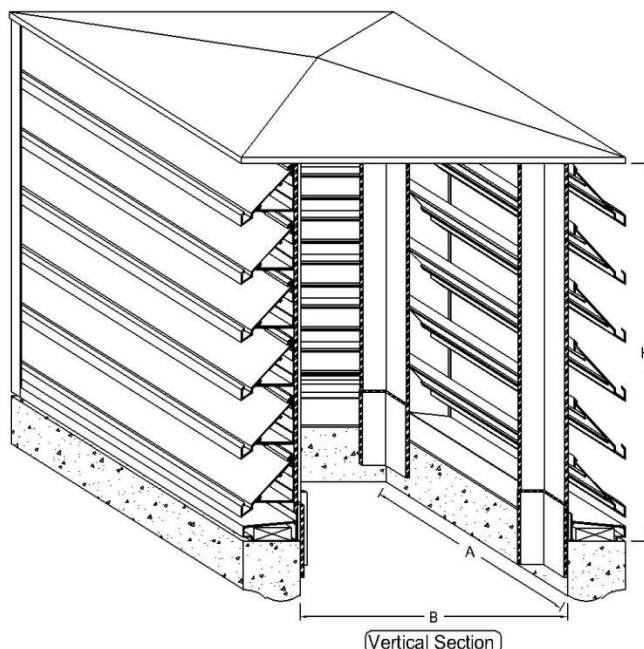
## EA-PH Extruded Aluminum Penthouse

### Standard Penthouse Construction

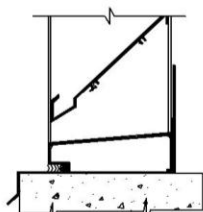
|                          |   |
|--------------------------|---|
| ✓ Frame                  | Channel   |
| ✓ Frame Thickness        | .081" extruded aluminum 6063-T5                       |
| ✓ Blades Thickness       | .081" extruded aluminum 6063-T5                       |
| ✓ Roof                   | .063" Thick formed aluminum, undercoat with black tar |
| ✓ Fasteners              | 3/16" plated steel screw                              |
| ✓ Screen                 | .050" x 3/4" expanded aluminum without frame          |
| ✓ Finish                 | Mill  |
| ✓ Undersized             | 1/4" under opening sizes                              |
| ✓ Mullions               | Invisible   |
| ✓ Minimum Size           | 12" L x 12" W x 12" H                                 |
| ✓ Maximum Single Section | 120" L x 84" W x 84" H                                |

### Optional Construction

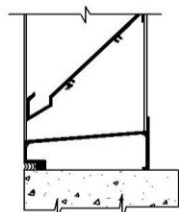
|                   |   |
|-------------------|---|
| Frames            | Channel .125" extruded aluminum 6063-T5         |
| Blades            | .125" extruded aluminum 6063-T5                 |
| Louver Fasteners  | Welded Construction                             |
|                   | Stainless Steel Fasteners                       |
|                   | Aluminum Fasteners                              |
| Screen            | .063" x 1/2" wire mesh Bird Screen              |
|                   | 18 x 16 Insect screen Insect Screen             |
| Finish            | Prime coat                                      |
|                   | Baked enamel                                    |
|                   | Powder coat                                     |
|                   | Kynar 500 2 Coat 3 Coat<br>Anodized Clear Color |
| Mullions          | Visible   |
| Frame Accessories | Flange  |
|                   | Pan   |
|                   | Extended sill                                   |
|                   | Frameless                                       |



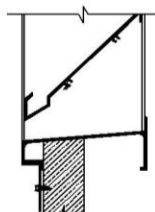
**Air Flow Model EA-PH.** The ratings shown are based on tests & Procedures Made in accordance with AMCA standard 500-L. The actual test results of water penetration & air performance may vary (+/-10%) depending on the actual application. Free area calculations are (+/-5%)



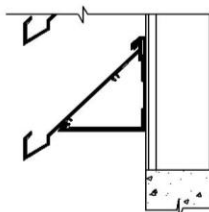
Channel W/ Sill



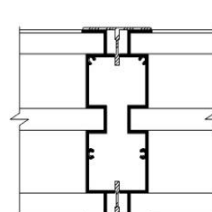
Channel Frame



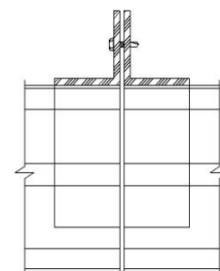
Frame W/Sill Cap



Frameless



Exposed Mullion



Invisible Mullion

### Penthouse Schedule

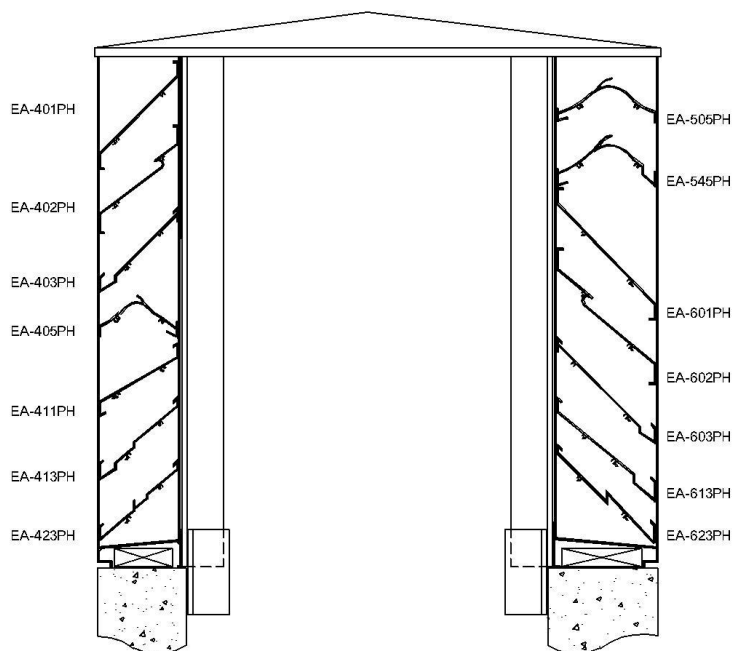
| Item | Qty | Opening Size (A x B x H) | Notes | Project:  |  |
|------|-----|--------------------------|-------|-----------|--|
|      |     |                          |       | Location: |  |
|      |     |                          |       | Arch/Eng: |  |
|      |     |                          |       | Customer: |  |

#### Penthouse Models

| Model    | Blade Style           | Blade Angle | Blade Spacing | Blade Thickness | Free Area (48"x48") | F.A. % | Press Drop w.g. | Beginning Point of Water Penetration |
|----------|-----------------------|-------------|---------------|-----------------|---------------------|--------|-----------------|--------------------------------------|
| EA-401PH | Straight              | 45°         | 4-1/2"        | 0.081"          | 8.05                | 50%    | 0.17"           | 983                                  |
| EA-402PH | Center Baffle         | 45°         | 4-1/2"        | 0.081"          | 7.47                | 47%    | 0.18"           | 930                                  |
| EA-403PH | Drainable             | 45°         | 4"            | 0.081"          | 9.05                | 57%    | 0.17"           | 1109                                 |
| EA-411PH | Straight              | 30°         | 2-1/2"        | 0.081"          | 10.08               | 54%    | 0.16"           | 740                                  |
| EA-413PH | Drainable             | 39°         | 3-1/2"        | 0.081"          | 9.54                | 54%    | 0.12"           | 1016                                 |
| EA-405PH | Sight Proof           | 36°         | 2"            | 0.081"          | 9.10                | 57%    | 0.17"           | 1000                                 |
| EA-423PH | Double Drainable      | 40°         | 3-1/2"        | 0.081"          | 8.51                | 58%    | 0.12"           | 1051                                 |
| EA-505PH | Sight Proof           | 36°         | 2"            | 0.081"          | 9.06                | 57%    | 0.27"           | 1150                                 |
| EA-545PH | Sight Proof/Drainable | 40°         | 2"            | 0.081"          | 9.06                | 57%    | 0.27"           | 1207                                 |
| EA-601PH | Straight              | 45°         | 6-1/2"        | 0.063"          | 7.85                | 50%    | 0.14"           | 1301                                 |
| EA-602PH | Center Baffle         | 45°         | 6-1/2"        | 0.081"          | 8.59                | 54%    | 0.16"           | 852                                  |
| EA-603PH | Drainable             | 45°         | 5-3/4"        | 0.081"          | 8.82                | 57%    | 0.16"           | 990                                  |
| EA-613PH | Drainable             | 39°         | 4-1/2"        | 0.081"          | 9.06                | 57%    | 0.17"           | 1076                                 |
| EA-623PH | Double Drainable      | 45°         | 5-3/4"        | 0.093"          | 9.10                | 57%    | 0.13"           | 1177                                 |
| V-DEM-08 | Vertical Sight Proof  | 40°         | 2"            | 0.081"          | 8.42                | 53%    | 0.20"           | 1250                                 |

#### Notes:

- Above information is based on a 4' x 4' unit
- Drainable blades are best recommended with post corners and visible mullion, to prevent water from cascading
- Removable, Hinged & Insulated Roofs are available.
- Adjustable, thin-line and vertical blades that are not included above, can be made as a louvered penthouses
- Back-draft, control, motorized & non-motorized dampers can be provided for installation
- Pneumatic, 24, 120, & 240 volt actuators, upon request



Blade Types



#### Roof Curbs

| Louver Depth | Actual Outside Dimension |
|--------------|--------------------------|
| 4"           | Inside Dimension + 8"    |
| 5"           | Inside Dimension + 10"   |
| 6"           | Inside Dimension + 12"   |
| 8"           | Inside Dimension + 16"   |
| Other        | Consult Manufacturer     |

**Note:** Curb thickness shall be no more than 3" thick to fit inside the bottom frame